

43 Finch Street Beechworth VIC

4  1  2 

This home will certainly tick all the boxes for many buyers currently looking in central Beechworth. First and foremost this home is located in Beechworth's most sought after tree-lined street where houses of this calibre are tightly held and rarely offered for sale. Secondly, all the hard work has been done on this home with only minor and personal finishing touches required. Thirdly, it is an easy stroll to all our wonderful local shops, cafes and restaurants. Fourthly, it has a ready-made Man Cave, and finally, the Price is Right!

This iconic renovated Beechworth Edwardian style home is located on an allotment of approx. 1012sqm and features 3 Queen-size bedrooms plus a good size single bedroom or home office, the master bedroom with built-in-robos. A wide hallway leads from the front door through to the rear of this home with floating Swedish timber floors throughout.

Price : \$ 525,000
Land Size : 1012 sqm
View : <https://www.indigorealestate.com.au/sale/vic/north-eastern/beechworth/residential/house/5670035>

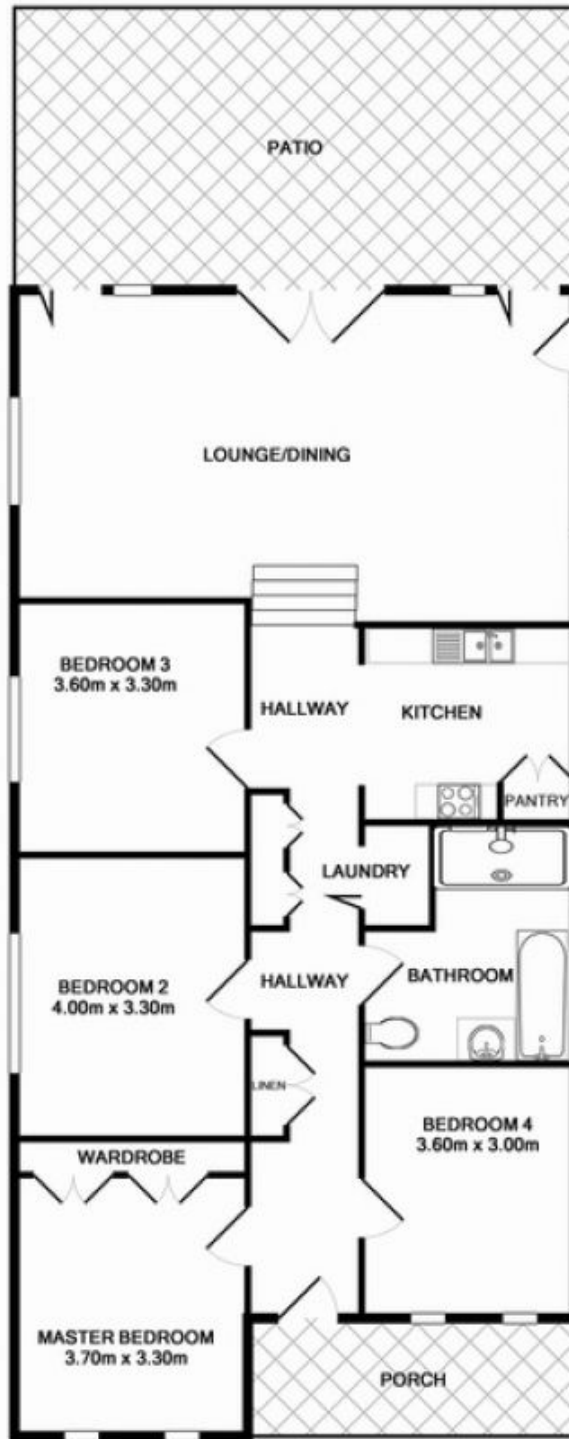
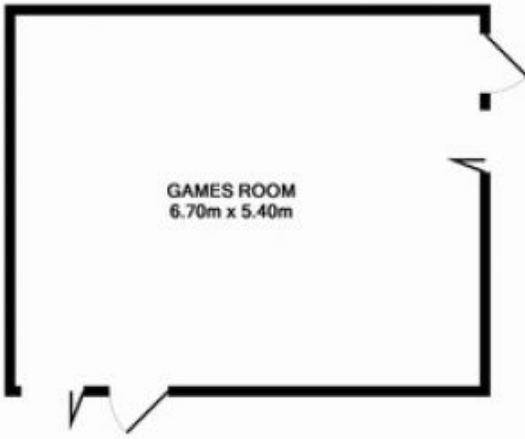


Jamie Horne
0357 283295



TOTAL APPROX. FLOOR AREA 157.3 SQ.M. (1693 SQ.FT.)

For illustrative purposes only. Decorative finishes, fixtures, fittings and furnishings do not represent the current state of the property. Measurements are approximate. Not to scale
Made with Metropix ©2015



TOTAL APPROX. FLOOR AREA 157.3 SQ.M. (1693 SQ.FT.)
Measurements are approximate. Not to Scale. For illustrative purposes only.