



### 258 Racecourse Road Chiltern VIC

3  2  1 

Located only five minutes to the popular central Chiltern sporting facilities, schools, parks, transport connections and local conveniences this property has been thoughtfully laid out to offer the ideal horse and family sized home.

Situated on approx. 26.09 acres; adjacent to, and with access to Black Dog Creek and nearby riding trails this welcoming and expansive property is a rare offering of a sought-after and tightly held acreage property ideal for horses and other livestock.

The three-bedroom, two-bathroom brick and tile roofed home offers a private and separate parent's wing with a generous king-sized bedroom featuring built-in-robos, ceiling fan, and a tiled ensuite with shower, toilet, vanity and basin. There is an additional queen-size and a double size bedroom, both of which are carpeted and include

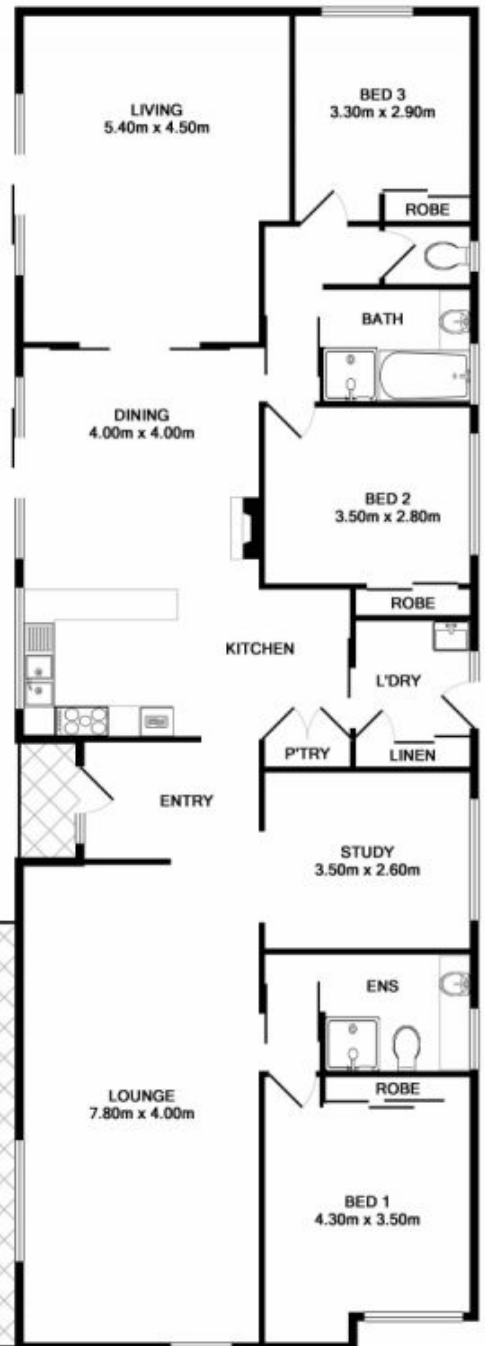
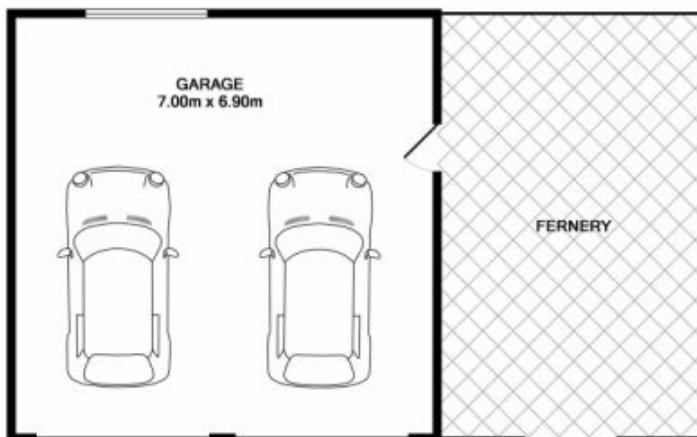
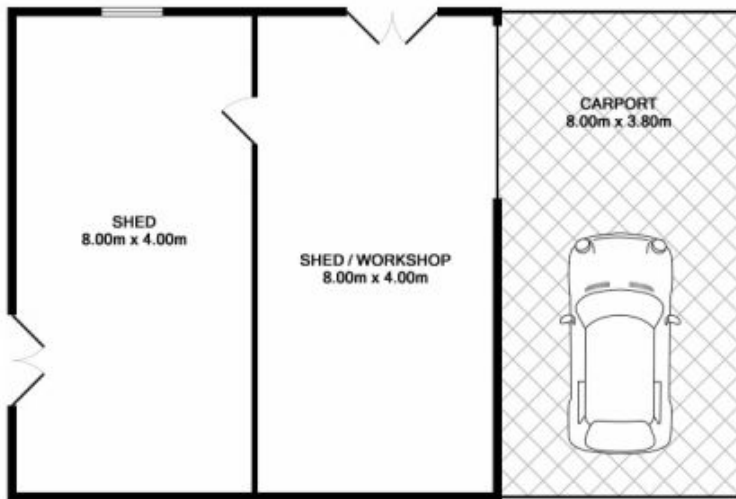
**Price** : \$ 499,000  
**Land Size** : 26 Acres  
**View** : <https://www.indigorealestate.com.au/sale/vic/north-eastern/chiltern/residential/house/5670238>



**Jaqui Ward**  
 0357 283295



**Jamie Horne**  
 0357 283295



Measurements are approximate. Not to scale. Illustrative purposes only