



1/12 Lower Stanley Road Beechworth VIC

2  1  1 

Perfectly positioned, just minutes from Beechworth's town centre, this two-bedroom, one-bathroom, light-filled unit offers stunning views towards Lake Sambell, with all the local shops, cafes, restaurants, and conveniences within easy reach.

Land Size : 240 sqm
View : <https://www.indigorealestate.com.au/lease/vic/north-eastern/beechworth/residential/unit/7405322>

The entry to this home is from an elevated timber deck, which opens up to a light filled, open-plan lounge and dining area with reverse-cycle air-conditioning and ceiling fan. There is an adjacent kitchen which includes electric cooking, a single stainless-steel sink and plenty of storage and meal preparation areas.

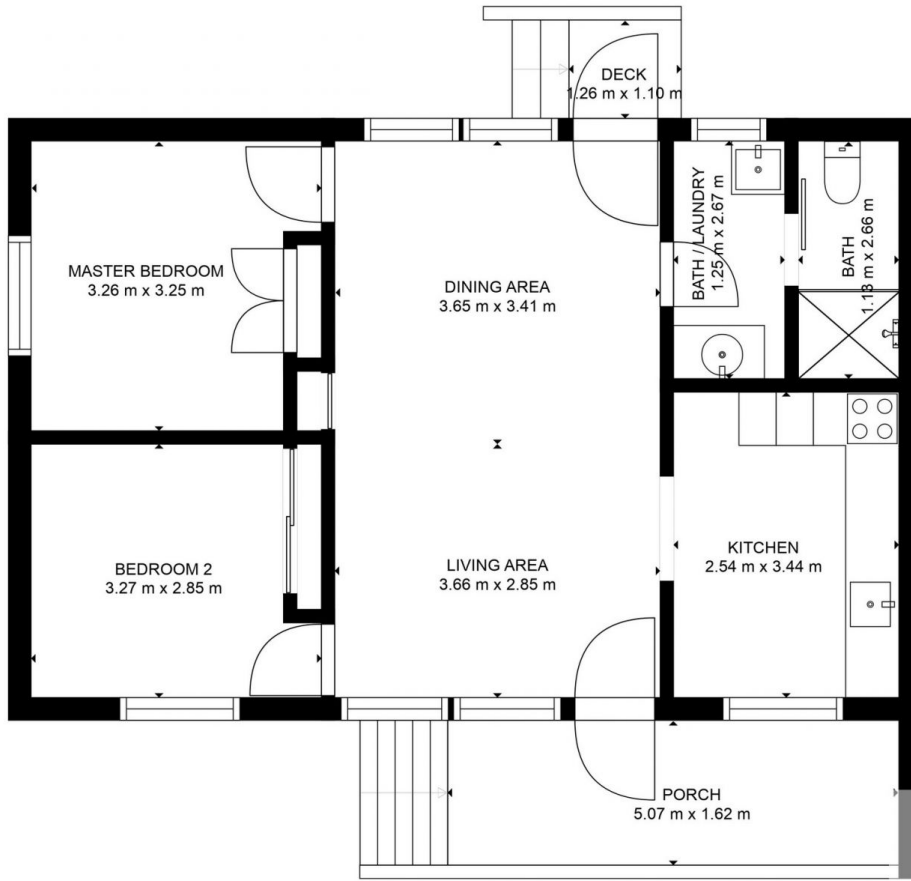
This unit features two carpeted, queen-sized bedrooms with built-in-robos and views towards Lake Sambell. There is a combined bathroom and laundry that includes a single vanity, toilet, shower, and wash trough. Electric hot water is



Jaqui Ward
0357 283295



Maxine Cappelli
0357283295



GROSS INTERNAL AREA
 FLOOR 1: 61 m², EXCLUDED AREAS:
 DECK: 1 m², PORCH: 8 m²
 TOTAL: 61 m²

MEASUREMENTS ARE CALCULATED BY CUBICASA TECHNOLOGY. DEEMED HIGHLY RELIABLE BUT NOT GUARANTEED.