



2 Mann Court Beechworth VIC

4  2  2 

Located on a generous allotment of approx. 847sqm in the popular Red Hills Estate, this four-bedroom, two-bathroom, brick, and tiled roofed home is ideally located with easy access to the local schools, Beechworth Golf Course, Tennis Courts, Baarmutha Park, Lake Sambell, The Murray to Mountains Rail Trail and the Beechworth Mountain Bike Park. Beechworth's shops, cafes, restaurants, historic attractions, and conveniences are also within approx. 1.5km.

This privately situated home offers an open plan, light-filled, tiled, living area featuring a generously sized kitchen with a breakfast bar, double stainless-steel sink, electric oven and cooktop, dishwasher, excellent storage including a pantry and an adjacent meals and dining area with sliding door access to an outside BBQ area and fully fenced rear garden. There is internal access from the kitchen to the

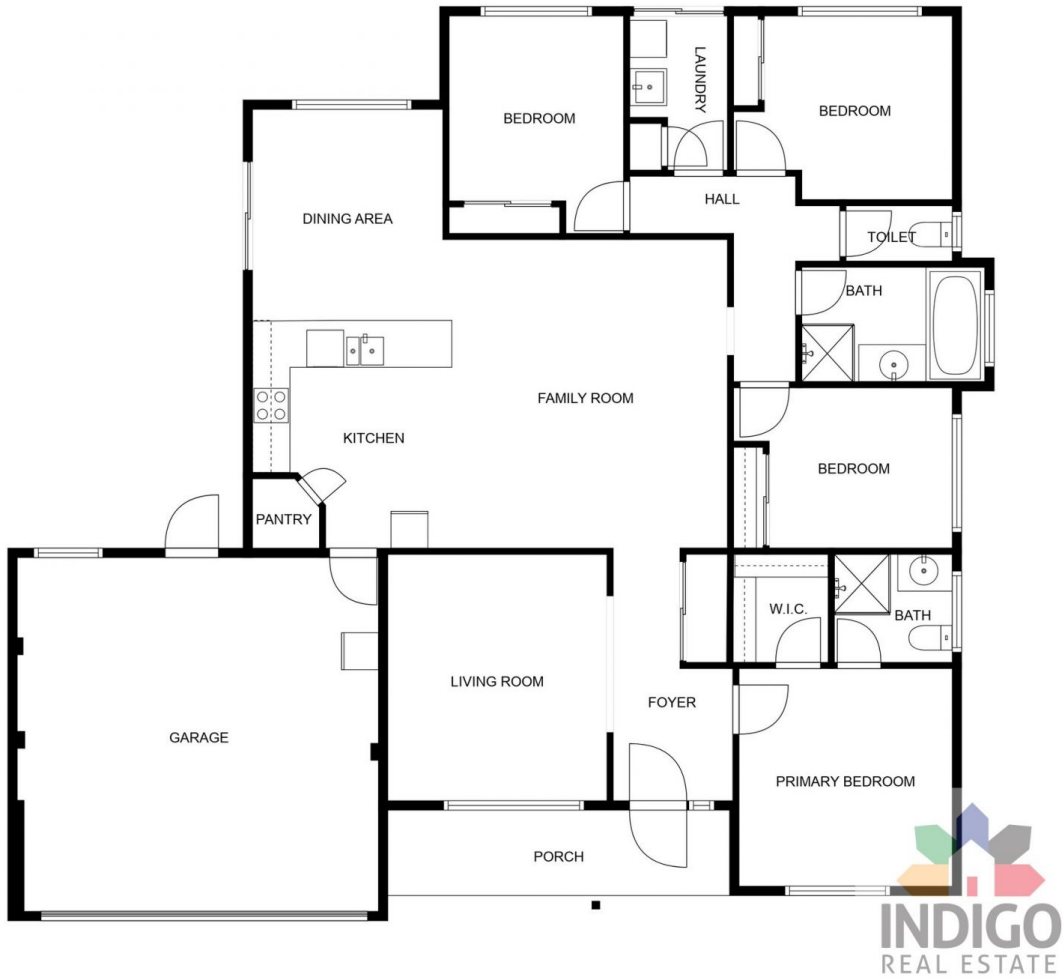
Price : \$ 682,000
Land Size : 847 sqm
View : <https://www.indigorealestate.com.au/sale/vic/north-eastern/beechworth/residential/house/7832863>



Jaqui Ward
 0357 283295



Jamie Horne
 0357 283295



MEASUREMENTS ARE CALCULATED BY CUBICASA TECHNOLOGY. DEEMED HIGHLY RELIABLE BUT NOT GUARANTEED.