



### 16 Hodge Street Beechworth VIC

3  2  2 

Located on approx. 1758 sqm and with private rear driveway access, this stunningly presented and maintained three/four-bedroom, two-bathroom home is conveniently located only approx. 800m to central Beechworth and Lake Sambell approx. 200m. Walking and riding trails, Chinese Gardens, Swimming Pool, and the Bowls Club are also nearby.

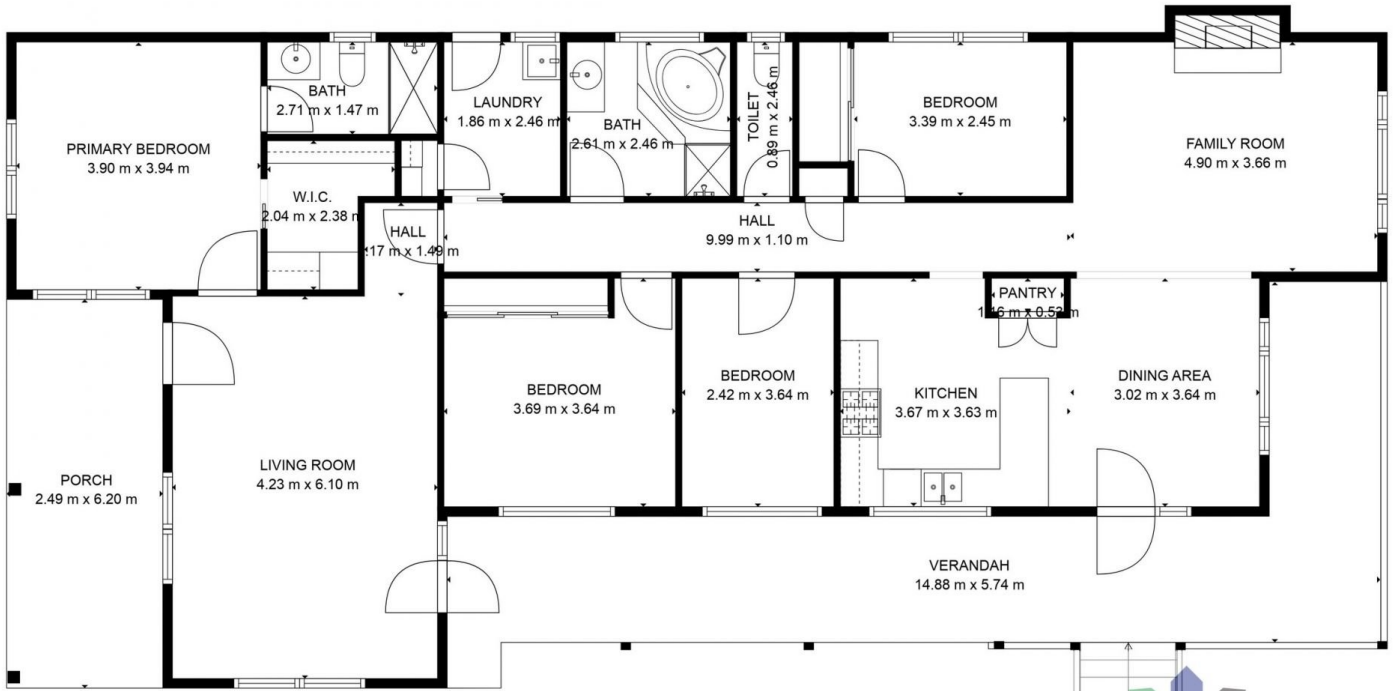
**Price** : \$550 per week  
**Land Size** : 1758 sqm  
**View** : <https://www.indigorealestate.com.au/lease/vic/north-eastern/beechworth/residential/house/8043040>

This home features a quality, contemporary, kitchen with timber tops, a double stainless-steel sink, an electric oven and gas cooktop, a dishwasher, and excellent storage. The adjacent, light-filled, family room and meals area features hardwood floors and expansive, elevated, views across Beechworth.

The main king-size bedroom features a spacious walk-in robe and a tiled ensuite including a shower, toilet, and



**Jaqui Ward**  
**0357 283295**



**TOTAL: 157 m2**

FLOOR 1: 157 m2

EXCLUDED AREAS: PORCH: 15 m2, VERANDAH: 37 m2, FIREPLACE: 1 m2

FLOOR PLAN CREATED BY CUBICASA APP. MEASUREMENTS DEEMED HIGHLY RELIABLE BUT NOT GUARANTEED.