



**2/23 Finch Street Beechworth VIC**

2  1  1 

Privately situated in one of Beechworth's most sought-after, tree-lined streets, and only approx. 400m to local shops, cafes, restaurants, the supermarket, doctors' surgery, churches, historic attractions, and conveniences, this two-bedroom, one-bathroom, brick, and iron-roofed home on an approx. 396sqm allotment is ideally located for easy, low-maintenance living.

This home includes a kitchen with excellent storage, an electric oven and cooktop, dishwasher, stainless-steel sink, and an adjacent meals area with a sliding door to the rear gardens. The comfortably sized, open-plan, lounge provides access to the front undercover verandah and gardens.

**Type** : Unit  
**Price** : \$ 565,000  
**Land Size** : 396 sqm  
**View** : <https://www.indigorealestate.com.au/sale/vic/north-eastern/beeceworth/residential/unit/8046042>

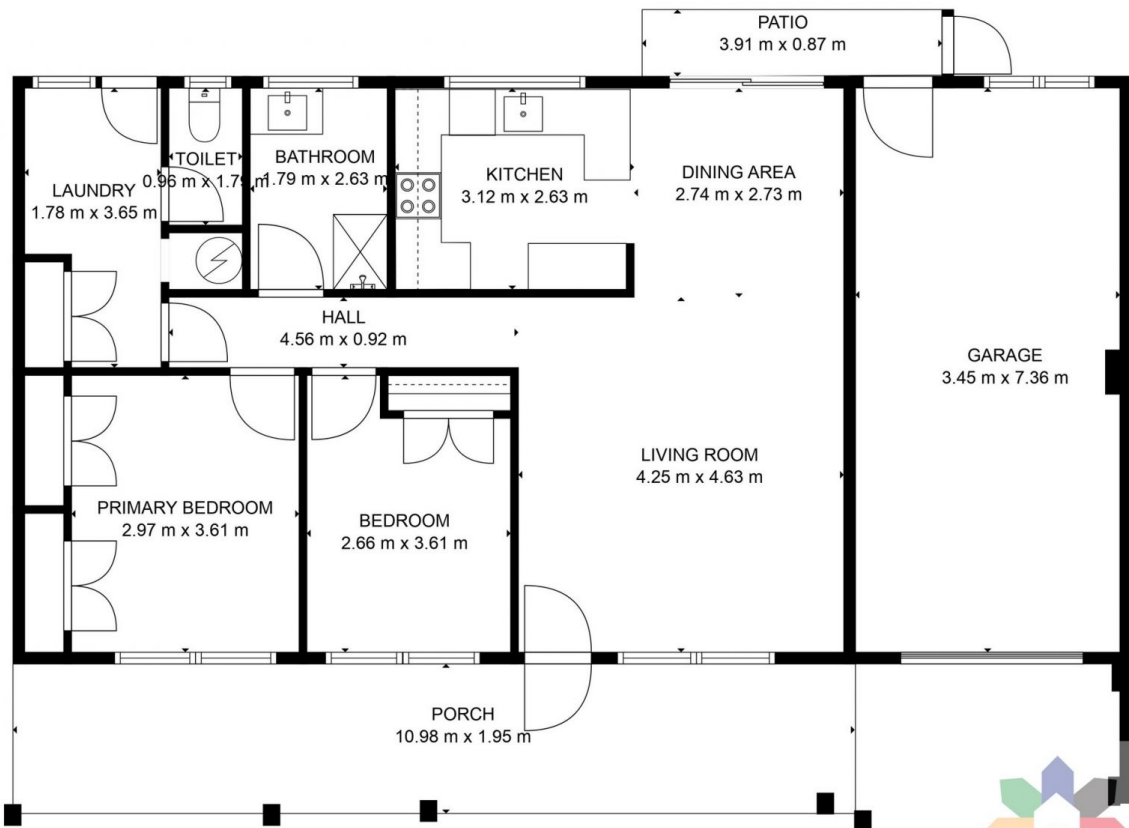


**Jamie Horne**  
0357 283295



**Jaqui Ward**  
0357 283295

[For full version visit the website](https://www.indigorealestate.com.au)



**TOTAL: 79 m<sup>2</sup>**

FLOOR 1: 79 m<sup>2</sup>

EXCLUDED AREAS: GARAGE: 25 m<sup>2</sup>, PATIO: 3 m<sup>2</sup>, PORCH: 21 m<sup>2</sup>

FLOOR PLAN CREATED BY CUBICASA APP. MEASUREMENTS DEEMED HIGHLY RELIABLE BUT NOT GUARANTEED.