






8 Polmear Lane Beechworth VIC

3  1  4 

Located on a generous allotment of approx. 4193 sqm and surrounded by established, low-maintenance gardens, this three-bedroom, one-bathroom, fully renovated, and light-filled home, blends its original charm with the comforts and conveniences of country living and lifestyle. It is ideally situated only a short drive to the heart of Beechworth.

This home includes the king-size main bedroom with built-in robes, reverse-cycle air-conditioning, polished timber floorboards, and French doors accessing a private and sunny deck overlooking the rear gardens. Upstairs, there are two additional carpeted and spacious queen-size bedrooms, each with built-in robes and reverse-cycle air-conditioning.

Type : House
Price : \$890,000
Land Size : 4193 sqm
View : <https://www.indigorealestate.com.au/sale/vic/north-eastern/beechworth/residential/house/8146594>

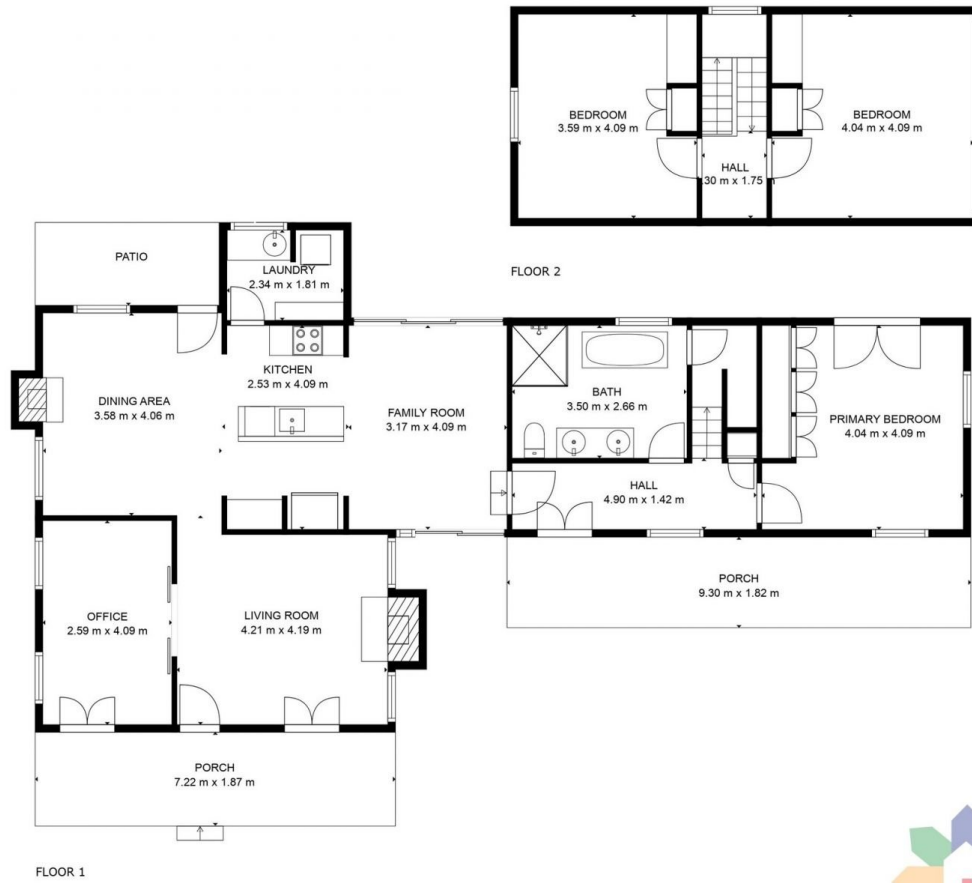
[For full version visit the website](https://www.indigorealestate.com.au)



Jaqui Ward
 0357 283295



Jamie Horne
 0357 283295



GROSS INTERNAL AREA
 FLOOR 1: 108 m², FLOOR 2: 25 m²
 EXCLUDED AREAS: PORCH: 31 m², PATIO: 13 m², FIREPLACE: 1 m²,
 LOW CEILING: 12 m²
 TOTAL: 133 m²

MEASUREMENTS ARE CALCULATED BY CUBICASA TECHNOLOGY. DEEMED HIGHLY RELIABLE BUT NOT GUARANTEED.

