

9 Fleury Court Beechworth VIC

4 🛏 2 🚿 5 🚗

Located on a large allotment of approx. 2,107sqm this quality-built four-bedroom, two-bathroom brick, and tiled roofed, spacious, family-sized home is surrounded by established gardens and is only minute's walk to the local golf club, tennis courts, football and netball clubs, schools, and the Murray to Mountains walking and riding trail.

This home includes the main king-size bedroom with a walk-in robe, ceiling fan, and a recently updated tiled ensuite with toilet, shower, vanity & basin. The three additional queen-sized bedrooms are situated in the north-western wing and include built-in robes and ceiling fans. Also located at the front of this home is a large home office which could be a fifth bedroom if required. Each of the bedrooms and home office are carpeted.

[For full version visit the website](https://www.indigorealestate.com.au)

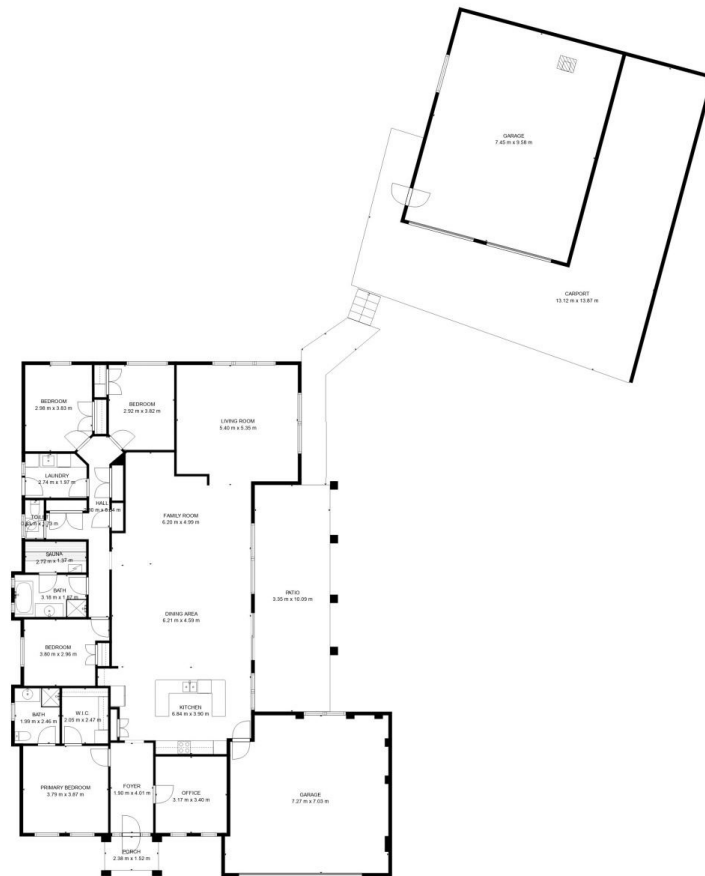
Type : House
Price : \$1,350,000
Land Size : 2107 sqm
View : <https://www.indigorealestate.com.au/sale/vic/north-eastern/beeceworth/residential/house/8151896>



Jamie Horne
 0357 283295



Jaqui Ward
 0357 283295



TOTAL: 219 m2

FLOOR 1: 219 m2

EXCLUDED AREAS: GARAGE: 120 m2, PORCH: 4 m2, PATIO: 34 m2,
 CARPORT: 93 m2, UNDEFINED: 10 m2

FLOOR PLAN CREATED BY CUBICASA APP. MEASUREMENTS DEEMED HIGHLY RELIABLE BUT NOT GUARANTEED.