



84 Sugarloaf Lane Beechworth VIC

3  2  4 

Set in the beautiful Woolshed Valley foothills, this architecturally designed, quality-built home features three bedrooms, two bathrooms, and a charming split-level layout. With a weatherboard exterior and iron roof, it's just minutes away from scenic walking and riding trails, Reidy Creek, Woolshed Falls, and only a 15-minute drive to central Beechworth.

Type : House
Price : \$1,595,000
Land Size : 19.6 Acres
View : <https://www.indigorealestate.com.au/sale/vic/north-eastern/beechworth/residential/house/8163319>

This stunning home has been carefully crafted to showcase garden and sunset views from every angle of the expansive downstairs living spaces. The kitchen boasts an electric oven, dishwasher, stainless-steel sinks, and a central island with a gas cooktop and ample seating for entertaining family and friends. The spacious lounge and dining area feature soaring timber-lined cathedral ceilings,

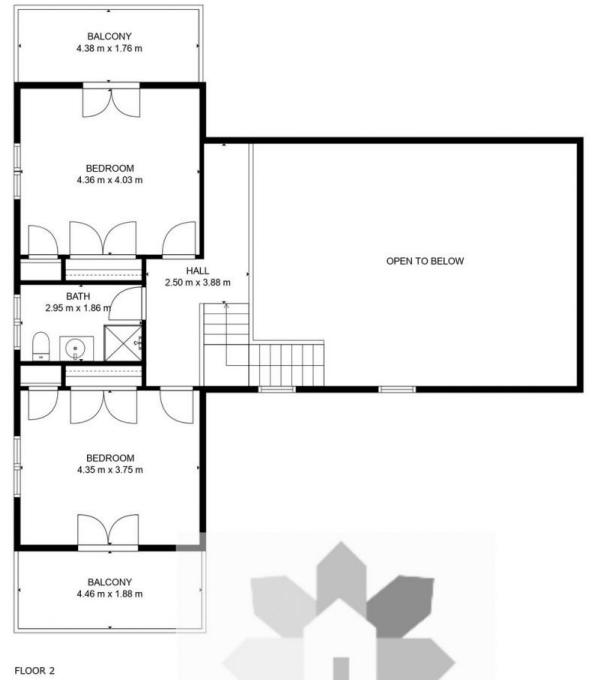
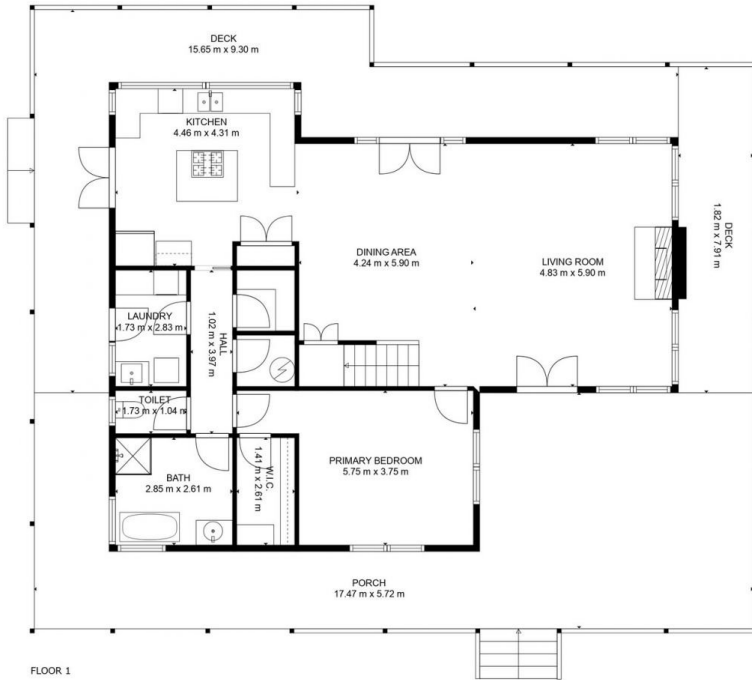
[For full version visit the website](https://www.indigorealestate.com.au)



Jamie Horne
 0357 283295



Jaqui Ward
 0357 283295



TOTAL: 177 m²
 FLOOR 1: 119 m², FLOOR 2: 58 m²
 EXCLUDED AREAS: DECK: 58 m², PORCH: 65 m², BALCONY: 16 m²,
 OPEN TO BELOW: 45 m²

FLOOR PLAN CREATED BY CUBICASA APP. MEASUREMENTS DEEMED HIGHLY RELIABLE BUT NOT GUARANTEED.